



Highlights

Shady Hollow
Home Owners Association

The Official Publication of the Shady Hollow Homeowners Association

Bailey Middle School Tree Sale

Attention Shady Hollow HOA members, there's an exciting opportunity to enhance your community and support a great cause! Bailey Middle School PTA is hosting a tree sale, and the proceeds will fund much needed upgrades to their garden and tree farm.



By purchasing these trees, you're not only beautifying your own property, but you're also supporting a great cause. The Bailey Middle School PTA is dedicated to improving the educational experience for their students and providing them with opportunities to learn and grow. By purchasing a Blue Ice Arizona Cypress, you're contributing to their efforts and making a difference in the community.

The proceeds from the tree sale will be used to fund modifications to the weed barrier and irrigation systems, as well as to purchase a new shipment of grow bags, soil, and an additional 100 seedlings. This will allow the garden and tree farm to expand and continue to provide quality trees for future sales and community projects.

Continued on page 4

IN THIS ISSUE

- Page 2 - President's Corner
- Page 4 - Bailey Tree Sale Continued
- Page 5 & 6 - Easter Eggstravaganza
- Page 7 - April Landscape tips
- Page 8 - Shady Hollow Clubs

"The environment is where we all meet, where we all have a mutual interest; it is the one thing all of us share. It is not only a mirror of ourselves, but a focusing lens on what we can become."
~ Lady Bird Johnson

NEXT BOARD MEETING

Thursday, April 27th
@ 7PM
Community Center
3303 Doe Run

Earth Day!
Saturday, April 22nd



President's Corner

By Shady Hollow Board President, Joan Allen



The Shady Hollow Homeowners' Association Board of Directors is getting back to work after our election. The turnout was one of the largest in recent history, which is great! We welcome Dave Anderson, who is returning to the board. I

was re-elected as President; Russ Downey returns as Vice President, Geoff Lawson continues as Treasurer, and Jamie Rygg remains as Secretary. Our committee chairs are:

Welcome - Mary Ellen Mathis

Executive - Joan Allen and board officers

Finance and Budget - Geoff Lawson

Community Center - Russ Downey

Events - Jamie Rygg

Policy - Jim Bateman

Long Range Planning and Parks and Common Grounds - Jim Downing

Pool - Sunil Shenoy and Dave Anderson, co-chairs

Architectural Control Committee Liaison- Jason Zirkle

Traffic - Sunil Shenoy

Ad hoc committee on the Dog Park - Tom Ennis

We had a wonderful Easter Eggstravaganza at the Community Center on April 8 - hope you had a chance to greet the Easter Bunny and enjoy the kids at the Egg Hunt. Thanks to our sponsor, Dena Davis and her crew as well as Jamie Rygg's Events team and our favorite furry rabbit, Russ Downey.

We are speeding toward the end of the school year and getting ready for summer fun. Take a moment to appreciate the past year and all of the accomplishments of our students.

Warm regards,



Current Board Members

PRESIDENT

Joan Allen

VICE PRESIDENT

Russell Downey

TREASURER

Geoff Lawson

SECRETARY

Jamie Rygg

David Anderson

Jim Bateman

Jim Downing

Laura Kennedy

Mary Ellen Mathis

Sunil Shenoy

Jason Zirkle

Shady Hollow Highlights

EDITOR

Amy Loughrey

LAYOUT

Rachel Adkins

ARTICLE & AD DEADLINE

Last day of the month

SHADY HOLLOW HOA

3303 Doe Run

Shady Hollow, TX 78748

O: (512) 280-6623

E: shadyhollow@shadyhollow.org

W: www.shadyhollow.org



Enjoy your backyard (without the mosquitoes).



Simple, Effective, and Affordable Mosquito Control

MosquitoTex is your locally grown, residential mosquito control service founded in Southwest Austin.

We help eliminate mosquitoes so families can take back their homesteads and get outdoors again.



**Sign Up Your Yard Today
and Get a FREE Spray.**

Offer ends May 31, 2023

MosquitoTex.com

Use Code: SH23

Only **\$74** PLUS TAX
per treatment
for most yards



MOSQUITOTEX

Simple, Effective, Affordable Mosquito Control

New customers only. Cannot be combined with any other offers.

Bailey Middle School Tree Sale

By Mike Berryman, cont'd from page 1

The star of this tree sale is the Blue Ice cultivar of Arizona Cypress, a fast-growing and hardy tree that is virtually pest and disease-free. Not only that, but deer tend to avoid them, so you won't have to worry about your new trees being eaten by wildlife.



These trees were grown using RootTrapper grow bags, which is a unique method of growing trees that ensures a healthy root system. The RootTrapper grow bags promote a thick and fibrous root system that wraps around the entire circumference of the bag, preventing any circling or root binding that can occur in traditional nursery containers. This method greatly increases the chances of successful establishment and survival of the tree once planted.

If you're interested in seeing the Blue Ice Arizona Cypress in action, head over to the Bailey Tennis Courts where you can see some of the same specimens that were planted as saplings in 2018. You'll be impressed by their growth and thriving nature.

Ordering these trees is simple and easy. You can use your credit card to purchase the trees through the Square catalog on the Bailey PTA website. For more information or to place an order, please contact Mike Berryman at mebrdb1963@gmail.com or call him at 512-914-0069.

Don't miss out on this fantastic opportunity to enhance your community and support a great cause. Order your Blue Ice Arizona Cypress today and watch as they thrive in your yard for years to come!



Shady Hollow Easter Eggstravaganza



Thank you
Dena Davis!





April Landscape Tips

Spring is Here!

By Kim Goyette

Spring is here and the wildflowers are in full bloom. Enjoy this beautiful weather and use it as an opportunity to get your garden flourishing.



Trees

Utilize the weather to your advantage now to prepare existing trees for the summer heat by ensuring they are properly nourished and have adequate water supplies. Though it is not advisable to prune trees during bloom or growth cycles, if a tree must be pruned, avoid stressing the tree as much as possible. Never remove more than a third of the foliage or hardwood of any tree and ensure the tree has an ample water source to further protect against stress. A water hose on a slow drip placed at the drip line is an effective method to water any tree or shrub to avoid such stress if you do not have an irrigation system.

Ornamental Beds

Now is a wonderful time to plant perennials. The selection of Texas native perennials is tremendous. There is a Texas Native for almost any soil, light and water condition. There are huge benefits to using Texas natives in your garden. These plants use less water, can survive in our extreme climate and the plant is already adapted to our local soil. So you can easily bring the natural beauty of our surrounding hill country into your yard.

Pay attention to water and light requirements for these plants. Most native perennials require full sunlight and very little water once established, though some, like many salvia varieties, are shade tolerant as well. Many natives will flower more profusely under drought stress conditions and over watering may result in weak spindly growth and reduced flowering. A handful of compost in the bottom of the planting hole can increase the chances of successful establishment when planting perennials.

Mexican Bush Sage, Majestic Sage, Mountain Sage, Cedar Sage, Autumn Sage, and the hybrid (non-native) Indigo Spires Sage are some great local varieties. Many Salvias doing well in the shade in addition to other shade performers including Pavonia, Turks Cap, Copper Canyon Daisy, Fall Aster, and Black-Eyed Susan. Another bulletproof native is Lantana. There are many colors and sizes available as well.

Consult the City of Austin's website for current watering restrictions. Remember to adjust your automatic sprinklers or manual watering times based on your address.

<https://www.austintexas.gov/department/water-restrictions>

SHADY HOLLOW EXERCISE GROUPS

Camp Gladiator

Join this fun group for an outdoor workout class at the Community Center. Classes are held in lower parking lot:

M, W, F at 8:15 a.m.
Tues and Thurs at 4:15 p.m.

For more info, please contact:
sarahcovey@campgladiator.com

Dance

Join this fun group for an outdoor dance class at the Community Center. Dance classes are held in lower parking lot:

Tues & Wed 7PM Saturday
Cardio at 10AM Saturday
Dance at 11AM

For more information, please contact Monica at:
dancewithmonicaatxinfo@gmail.com

Jazzercise

Light aerobic dance instruction. Adult classes meet in the Community Center:

Mon and Wed at 8 a.m.
M, T, W, TH, F at 9 a.m.
M, T, W, TH at 5:15 p.m.
Saturday at 8:30 a.m.
Sunday at 4:30 p.m.

For more info, contact Kristin:
kbtemple1@gmail.com
www.jazzercise.com

Yoga

Classes of focused stretches that help you find your inner peace. Adult classes meet in the Community Center;

Monday at 8:30 a.m.
Friday at 8:30 a.m.

For more information, please contact Pam: asana2om@gmail.com

Shady Hollow Clubs

Shady Hollow Artists Club

Come join us!

Are you interested in meeting other artists in the neighborhood? If so, join us for our next meeting at the Shady Hollow Community Center – West Side.

Open to all Shady Hollow Residents, no matter your medium or skill!

For more information or to RSVP, please contact Sarah Gaertner at: sgaertner@utexas.edu or by phone at 512-779-5619

Come Join the Shady Hollow Genealogy Club

The Genealogy Club generally meets at 7:00 p.m. on the 3rd Tuesday of odd-numbered months. (January, March, May, July, etc.).

Next meeting May 16th

Join us and compare notes, share research techniques, or brag about your famous ancestors. For more info, jim@jadowning.com.

Come Join the Shady Hollow Quilt Club

Calling all Shady Hollow Quilters! Please join us every 3rd Thursday from 1-4 p.m. to engage in various topics regarding quilting. Please come share your quilts and see the beautiful work of others.

Welcome New Neighbors!

Haley Gray Harris & Dianni Ortegón 3214 Doe Run

Thomas Lindsey & Janis Lindsey 3601 Indian Point Drive

WELCOME TO THE NEIGHBOURHOOD





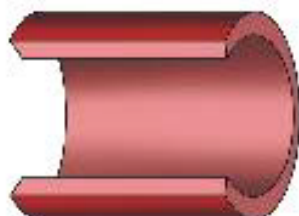
Keep doing the things you love.

Catch health problems before they go too far.

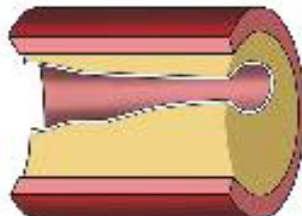
Life Line Screening offers a 4-screening package to provide peace of mind or early detection for risks of stroke and cardiovascular disease. The combination of these tests helps detect problems—before you have symptoms and while you and your doctor can still take action...so you can keep doing the things you love.



Plaque buildup can lead to cardiovascular disease, stroke and aneurysms.



A normal artery allows blood to flow through easily.



Plaque buildup in the arteries reduces your blood flow and can be dangerous if left untreated.

Register now to check the health of your arteries

4 Important Screenings for Only \$149 (Special Package Pricing)

- Carotid Artery Disease
- Peripheral Arterial Disease (PAD)
- Abdominal Aortic Aneurysm (AAA)
- Atrial Fibrillation (AFib)

Join the **10 million people** who have been screened. We are coming to your neighborhood.

When: Tuesday, April 18, 2023

Where: Shady Hollow Community Center
3303 Doe Run Austin, TX 78748-1813

To register for your appointment and to receive the special discount, please call toll-free **877-792-8479** or visit LLSA.SOCIAL/HC

Screening results are provided to you in about 14 days. We direct all participants with abnormal results to take the report to their physician. Appropriate modification of risk factors (including high blood pressure, smoking, heart disease, diabetes and poor diet) is also necessary for cardiovascular disease prevention. Our screenings cannot detect all forms of stroke risk or cardiovascular disease. All tests are for screening purposes only. You should consult with your personal physician regarding your screening results. Price does not include any applicable review fees. Insurance Note: Life Line Screening does not participate in the Medicare program and the cost of our screening services is not covered or reimbursable by Medicare. Life Line Screening does not file insurance claims nor provide referrals to any physician's group or hospital. If you are unable to attend the screening for any reason whatsoever, we will issue a gift card for the full amount to be used by you, or anyone you choose, for future screening services.

New Architectural Control Committee Members

We are proud to announce the following residents as the newest members on their Architectural Control Committee:

Bradley Reeves - Section 2A-1

Tom Dickson - Section 6



Shady Hollow Area Resident Todd Munsinger, Owner

Longtime south Austin resident, Todd Munsinger, has lived in the area since 1990, and in the Shady Hollow area for the last 17 years. Todd doesn't just build roofs, he has also built a reputation as a premier Austin area residential roofer.

If you are looking for a professional roofing company in the Shady Hollow area to inspect, repair, or replace your home's roof, you don't want to entrust this critical component to just anybody.

Todd and his team will devote the same care and attention to your family's roof as they would their own.

www.DBROOFS.com

